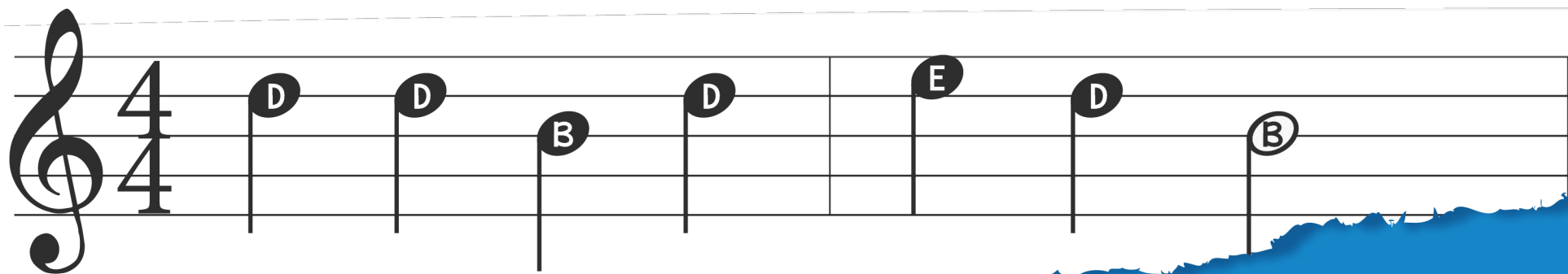
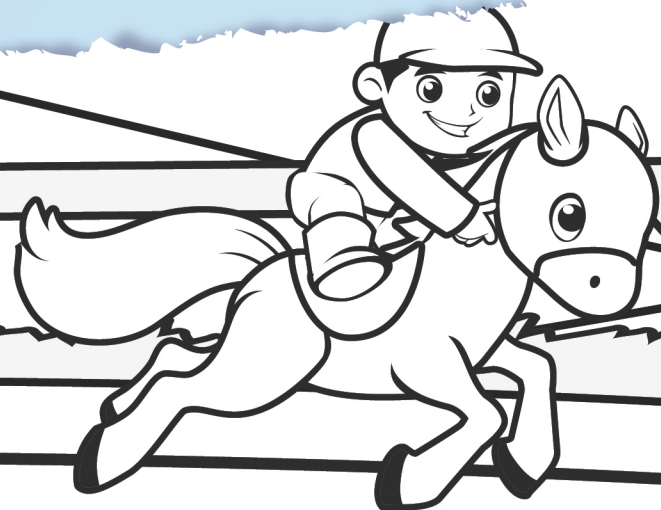


SONGBOOK 2

Ages 5-8 Strings 1-2-3



CAMP TOWN RACES



Camp-town la - dies sing

By Inga Hope

LEARNER NOTATION

Gentle GUITAR™

EXPERTS IN KIDS GUITAR EDUCATION

Gentle Guitar™ is a digital publisher of guitar education materials and teaching resources. For more information visit gentleguitar.com

©2018 Gentle Guitar™ & Inga Hope. All Rights Reserved.

No part of this publication may be reproduced in whole or in part, or transmitted in any form or by any means, electronic, mechanical, photocopy, recording or otherwise, without written permission of the publisher.

Contents

<i>Hot Cross Buns (Traditional)</i>	4
<i>Oats & Beans (Traditional)</i>	6
<i>Suzie's Adventures (Original)</i>	8
<i>Lightly Row (Traditional)</i>	10
<i>Clouds in the Sky (Traditional)</i>	12
<i>Having Fun (Original)</i>	14
<i>Joyful Geese (Traditional)</i>	16
<i>In the Light of the Moon (Traditional)</i>	18
<i>Twinkle Twinkle Little Star (Traditional)</i>	20
<i>Forest Creatures (Original)</i>	22
<i>Buttercup (Original)</i>	24
<i>Yankee Doodle (Traditional)</i>	26
<i>Camptown Races (Traditional)</i>	28
<i>Old MacDonald Had a Farm (Traditional)</i>	30
<i>Etude (Classical)</i>	32
<i>Michael Row the Boat (Traditional)</i>	34
<i>A-Tisket, A-Tasket (Traditional)</i>	36
<i>Round the Village (Traditional)</i>	38
<i>Allegretto in C (Classical)</i>	40



OATS & BEANS



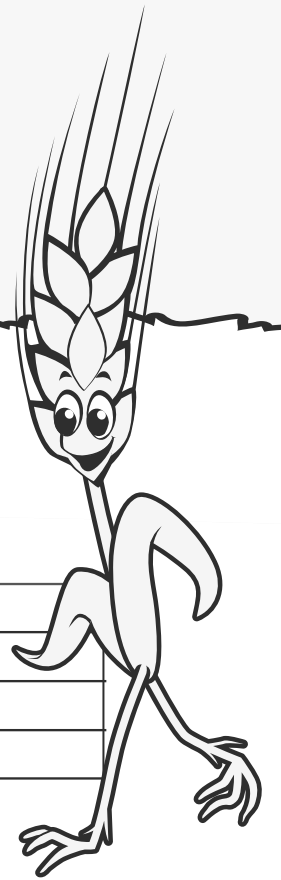
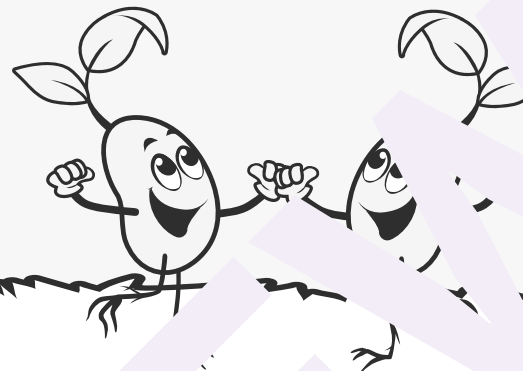
4/4

B B B G G G

Oats, peas, beans and bar - ley grow

C C C B A A A

Oats, peas, beans and bar - ley grow



Do you or - ny one know

The first line of music consists of a treble clef followed by seven notes: B4, C4, D4, A3, B4, C4, and D4. Each note is represented by a vertical stem and a circular head with the letter inside. The notes are placed on the second, third, and fourth lines of the staff, with the A3 note on the first space.

How oad peas, beans and barl - ley grow

The second line of music consists of a treble clef followed by seven notes: B4, A3, G3, G3, G3, G3, and a double bar line. Each note is represented by a vertical stem and a circular head with the letter inside. The notes are placed on the second, first space, and first line of the staff.



TWINKLE, TWINKLE LITTLE STAR



4/4 G G D D E E D

Twin - kle, twink - le lit - tle star

C C B B A A G

How won - der what you are. (Fine)

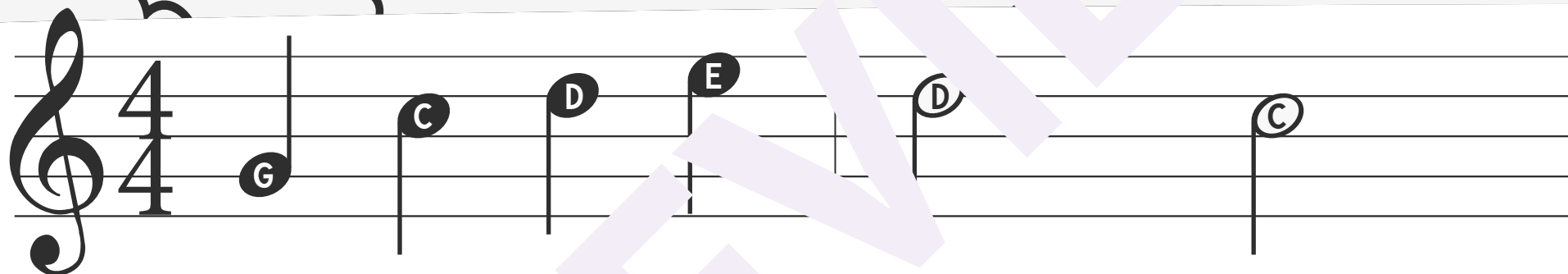


Up a - bove the world so high

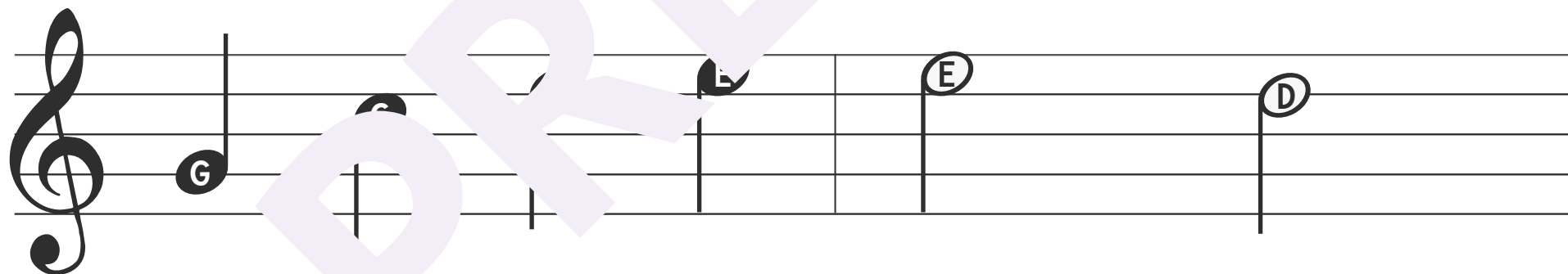
The first line of music consists of seven notes on a treble clef staff. The notes are: D4 (quarter note), D4 (quarter note), C4 (quarter note), B3 (quarter note), B3 (quarter note), and A3 (half note). Each note has a letter label above it: D, D, C, B, B, and A. The notes are connected by a single melodic line.

Like a dia - mond in the sky D.C. al Fine

The second line of music consists of seven notes on a treble clef staff. The notes are: D4 (quarter note), D4 (quarter note), C4 (quarter note), B3 (quarter note), B3 (quarter note), and A3 (half note). Each note has a letter label above it: D, D, C, B, B, and A. The notes are connected by a single melodic line. The line ends with a double bar line and two dots below it, indicating the end of the piece.



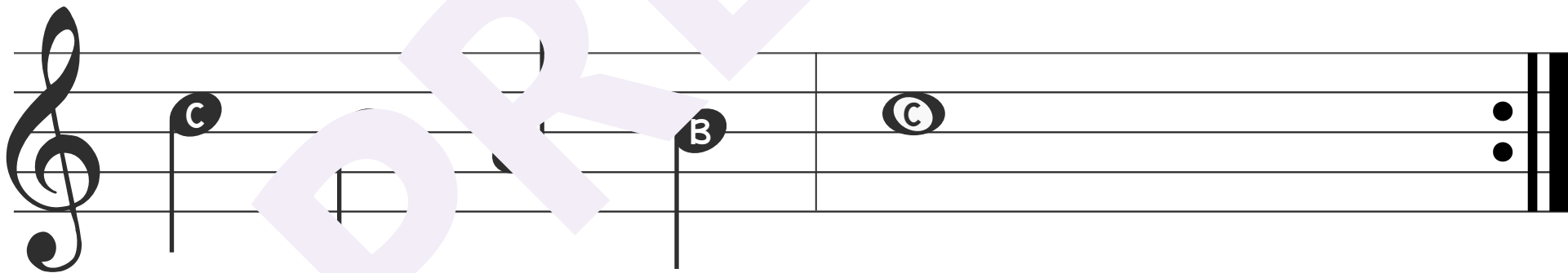
Deep in the green fo - rest



There are fur - ry crea - tures



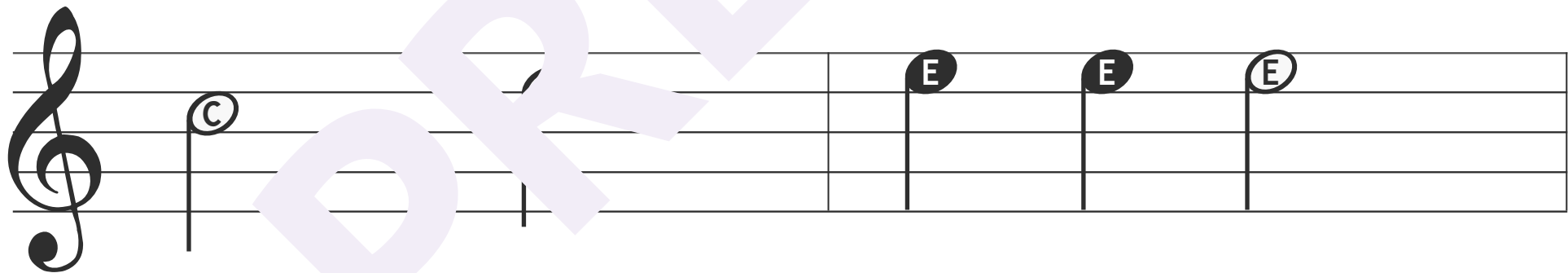
Big and small, short and tall



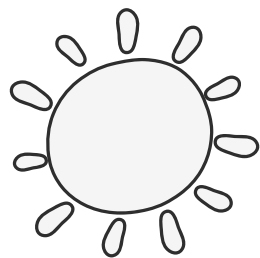
Li - ving side by side.



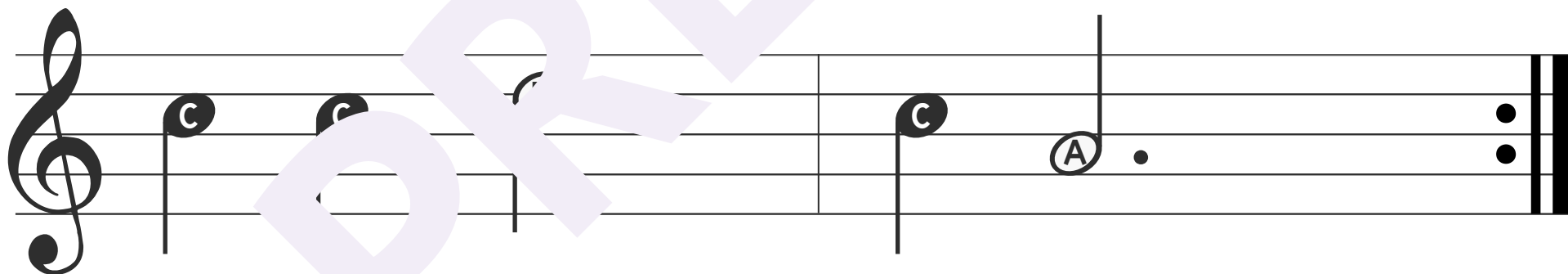
But - ter - cup, but - ter - cup



Yel low but - ter - cup



But - ter - cup, but - ter - cup



you are so pret - ty.



A-tisket, A-tasket

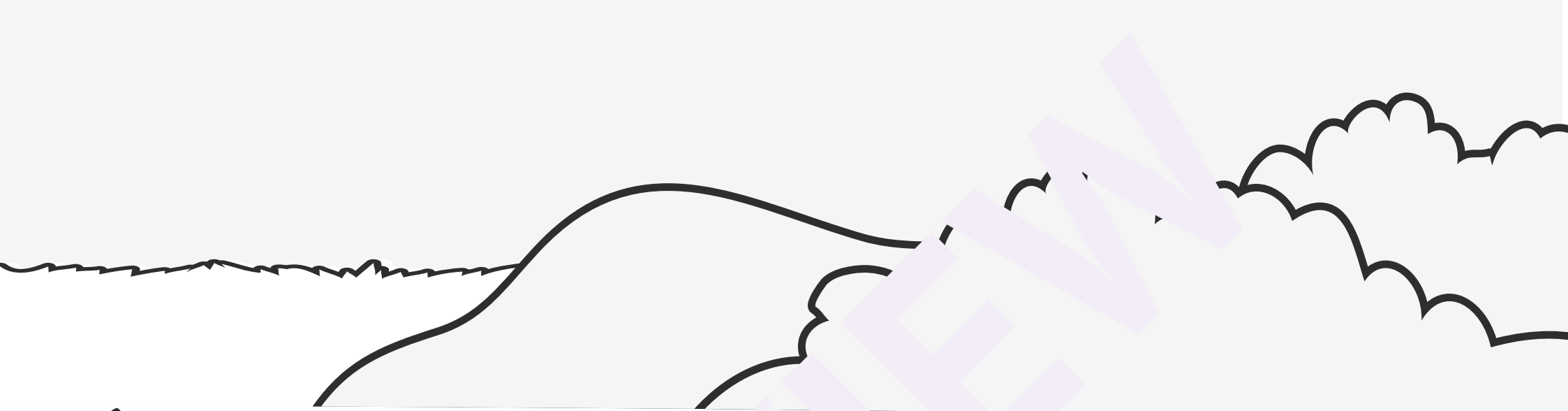
4/4

A - tis - ket, a - task - et a

Detailed description: This musical staff is in 4/4 time. It contains four measures. The first measure has a quarter note on B4. The second measure has a quarter note on D5. The third measure has a quarter note on B4. The fourth measure has a quarter note on C5. The lyrics 'A - tis - ket, a - task - et a' are written below the staff, with hyphens indicating syllables across measures.

green and yel - low bas - ket. I

Detailed description: This musical staff continues the melody. It contains four measures. The first measure has a quarter note on D5. The second measure has a quarter note on D5. The third measure has a quarter note on B4. The fourth measure has a quarter note on B4. The lyrics 'green and yel - low bas - ket. I' are written below the staff, with hyphens indicating syllables across measures.



C C A C C A A

wrote a letter to my love and

D C A B G

on the way I lost - it.

This songbook is a part of the Gentle Guitar™ original songbook series.

Songbooks 1 and 2 are available for two age groups: (ages 5-8) and (ages 9-12+).

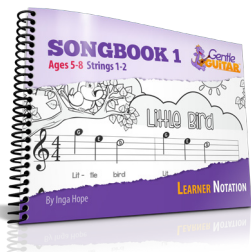
Each book, for each age-group, comes in Learner Notation, Standard Notation and Tab Notation.

The songs are arranged with easy chords and can be played as duets.

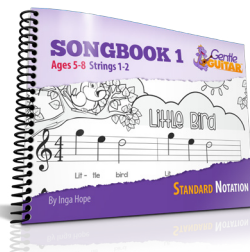
The illustrations are designed for the child to colour-in!

Visit gentleguitar.com for inspiration and handcrafted teaching materials.

Songbook 1 (Ages 5-8)



LEARNER NOTATION

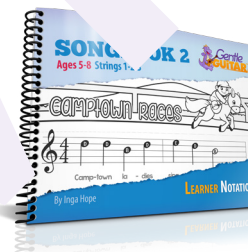


STANDARD NOTATION

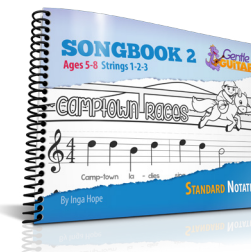


TAB NOTATION

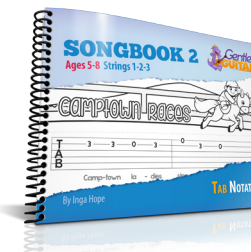
Songbook 2 (Ages 5-8)



LEARNER NOTATION

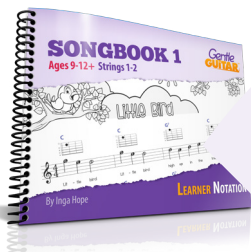


STANDARD NOTATION



TAB NOTATION

Songbook 1 (Ages 9-12+)



LEARNER NOTATION

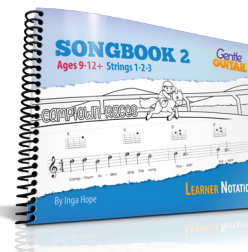


STANDARD NOTATION

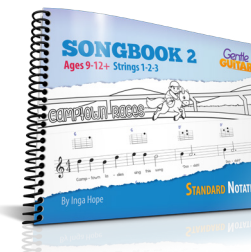


TAB NOTATION

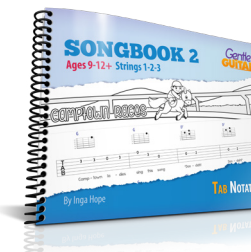
Songbook 2 (Ages 9-12+)



LEARNER NOTATION



STANDARD NOTATION



TAB NOTATION



Gentle Guitar Method™ (For Ages 5 - 8)

Teacher-Training Video Course (How to teach kids: 10 step-by-step lesson plans)

Method books 1, 2, 3, 4. (Lesson plans 1 - 40)

gentleguitar.com